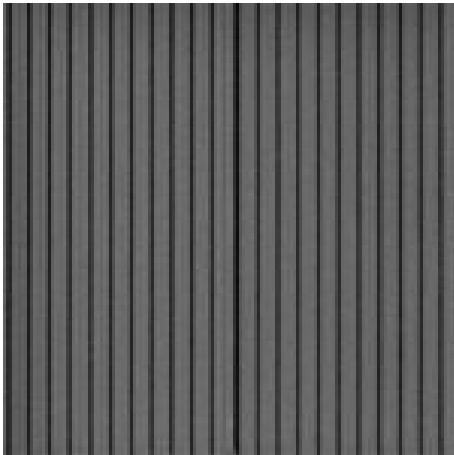




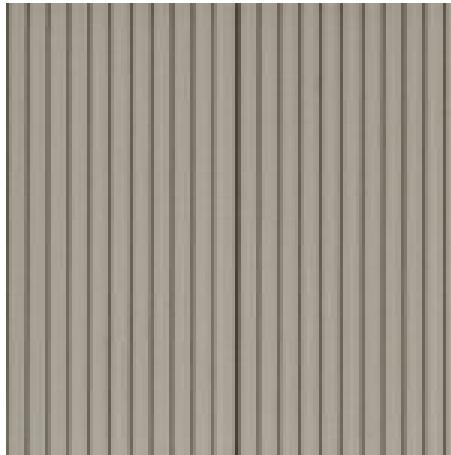
Segments

Segments is a contemporary range of porcelain tiles for the wall. The three surface options share the same flat matt finish with differing arrangements of linear grooves. The small formats can be fitted together however the large piece is not a modular fit with the others.

COLOUR



Segments Iron



Segments Ice



Segments Dove



Segments Coal



Segments Bone

SIZE OPTIONS

	140x140mm	715x240mm
Ice	•	•
Bone	•	•
Dove	•	•
Iron	•	•
Coal	•	•

TECHNICAL DETAILS

Product: Through bodied porcelain stoneware.

Surface Finish: Matt

Manufacturing Standard: BS EN 14411G
(details available on request)

Use: All walls.

Actual Size: Please note that these tiles have a sharp 90 degree edge for installation with a 3mm grout joint. The dimensions provided are exact therefore add the grout joint width to the overall module size when preparing setting out drawings.

Installation: Fit this range in a solid bed of Ardex polymer modified adhesive in accordance with BS5385: Parts 1, 2, 3 and 4. Adhesive and grout may vary in relation to the specific nature of the installation, and proposed substrates.

Grout Joint: Install these tiles with a minimum 3mm joint and grout with Ardex FS Grout (suitable for joints up to 4mm)

Weight: 18.2 kg/m²