



Core Shade

Core shade is a bold yet minimalist collection of concrete effect porcelain tiles. They come in 6 different colours and have a variety of sizes and thicknesses. Therefore, making these tiles perfect for all residential and commercial spaces. For example, kitchens, living rooms, work spaces and outside areas. In addition, you can choose between a semi-polished finish called Honed, or a structured finish, that is created through a engraved line pattern, for tactile and visual depth.

COLOUR



Core Shade Snug



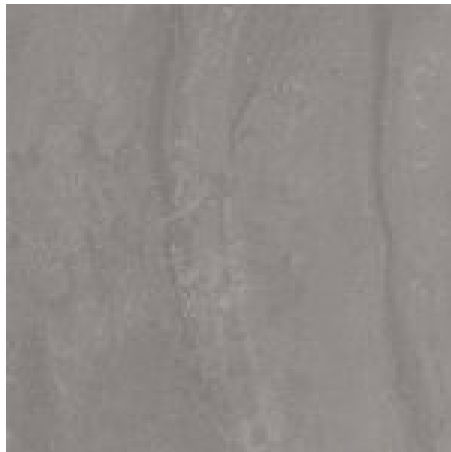
Core Shade Sharp



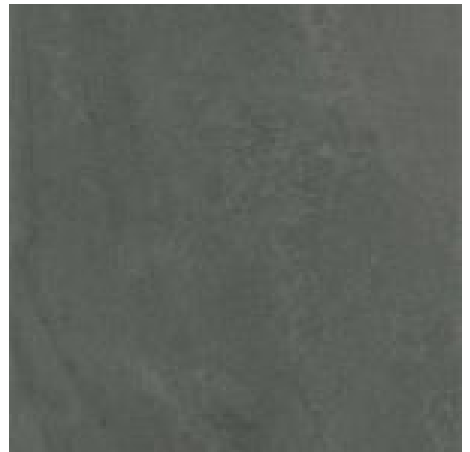
Core Shade Plain



Core Shade Fawn



Core Shade Cloudy



Core Shade Ashy

SIZE OPTIONS

	1500x750x6mm Honed	1200x600x11mm Honed/Structured	750x750x6mm Honed	600x600x11mm Honed/Structured	600x300x11mm Honed/Structured
Plain Core	•	•	•	•	•
Fawn Core	•	•	•	•	•
Snug Core	•	•	•	•	•

Cloudy Core	•	•	•	•	•
Ashy Core	•	•	•	•	•
Sharp Core	•	•	•	•	•

TECHNICAL DETAILS

Product: Core Shade is a full body porcelain stoneware tile. Unglazed, composed of a very fine mixture of quality clay with the addition of feldspar, quartz and kaolion. Manufactured by dry pressing of atomised powders and subsequently sintered by industrial firing at temperatures above 1200°C. The complete vitrification of the tiles allows for a compact, non-absorbent, frost-proof product, resistant to bending, impacts, staining, chemical attacks and thermal shock.

Surface Finish: Honed and Structured

Slip Resistance	Honed	Structured
DIN 51130	R9	R11
DIN 51197	Group A	Group C
Pendulum 96 Rubber	-	-
Pendulum 55 Rubber	-	-

Manufacturing Standard: BS EN 14411G (full details available on request)

Use: Dry internal floors – Honed finish
External and wet barefoot areas – Structured finish.

Variation: V2

Actual Size: Please note that these tiles are supplied with sharp 90 degree edges for installation with a 2 or 3mm grout joint. The dimensions provided above are exact and therefore the grout joint width should be added to reflect the overall module size when preparing setting out drawings.

Installation: We recommend that this range is bedded in a solid bed of polymer modified adhesive in accordance with BS5385: Parts 1, 2, 3 and 4. Adhesive and grouts required may vary in relation to the specific nature of the installation, and proposed substrates. Please enquire with our sales department for further information.

Grout Joint: These tiles should be installed with a minimum 3mm joint on floors and 2mm joint on walls.

Weight per square metre

6mm – 14.03 kg/m²
11mm – 24.80 kg/m²