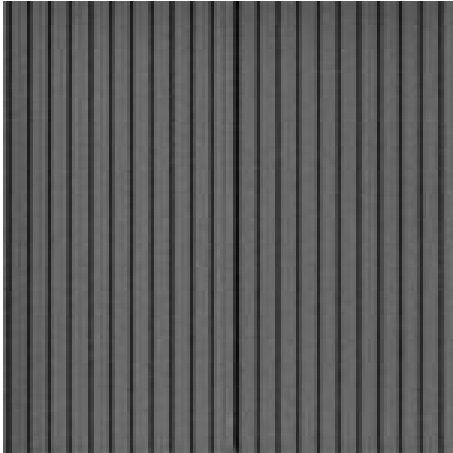




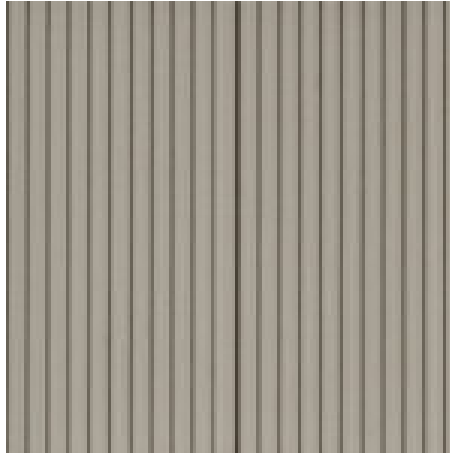
Segments

Segments patterned tiles make a modern linear accent or feature wall. Three tile surfaces assemble across the wall to make vibrant linear textures. The surface of these tiles is designed to hold grout in the grooves. As a result choosing a suitable grout colour is very important. The two smaller tiles fit alongside each other which opens up the options to make a unique pattern for the wall. The surface decoration on this series is three dimensional with the central line standing proud of the tile face. Because of this Segments patterned tiles play with shadow as well as texture.

COLOUR



Segments Iron



Segments Ice



Segments Dove



Segments Coal



Segments Bone

TECHNICAL DETAILS

Product: Through bodied porcelain stoneware.

Surface Finish: Matt

Manufacturing Standard: BS EN 14411G
(details available on request)

Use: All walls.

Actual Size: Please note that these tiles have a sharp 90 degree edge for installation with a 3mm grout joint. The dimensions provided are exact therefore add the grout joint width to the overall module size when preparing setting out drawings.



Installation: Fit this range in a solid bed of polymer modified adhesive in accordance with BS5385: Parts 1, 2, 3 and 4. Adhesive and grout may vary in relation to the specific nature of the installation, and proposed substrates.

Grout Joint: Install these tiles with a minimum 3mm joint.

Weight: 18.2 kg/m²