



Blend Concrete

Blend Concrete is a great tile choice for areas that span indoor to outdoor. It is available in larger sizes to make a seamless span of flooring in open living areas. For smaller rooms where a smart neutral tile fits the scheme, there are smaller tile sizes to suit. Blend Concrete has a light variance in tone from tile to tile. We have put this series together with the plain tiles but Blend does have a little something going on. Wherever it is fitted in open areas the variance is not extreme and the effect adds a little warmth.

COLOUR



Blend White Concrete



Blend Taupe Concrete



Blend Smoke Concrete



Blend Sand Concrete



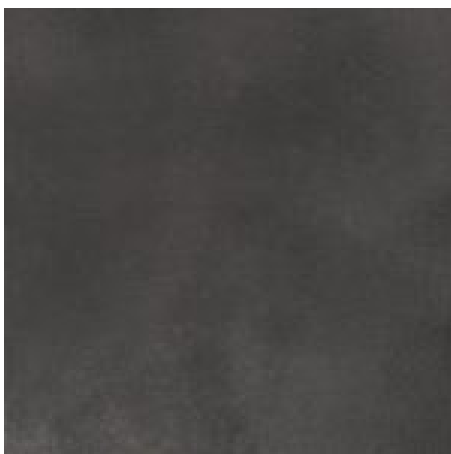
Blend Ivory Concrete



Blend Grey Concrete



Blend Brown Concrete



Blend Black Concrete

TECHNICAL DETAILS

Product: Blend is a full body porcelain stoneware tile.

Surface Finish: Natural

Slip resistance	Matt
DIN 11530	R10
DIN 51097	Group B
Pendulum 96 Rubber	Dry: 50 Wet: 34

Manufacturing Standard: BS EN 14411G (full details available on request)

Use: All internal walls and floors

Variation: V2

Actual Size: Please note that these tiles come with a sharp 90 degree edges for installation with a 2 or 3mm grout joint. The dimensions provided above are exact and therefore add the grout joint width to the overall module size when preparing setting out drawings.

Installation: Fix this range in a solid bed of polymer modified adhesive in accordance with BS5385: Parts 1, 2, 3 and 4. Adhesive and grout may vary in relation to the specific nature of the installation, and proposed substrates.

Grout Joint: Install these tiles with a minimum 3mm joint on floors and 2mm joint on walls.

Weight per square metre:

6.5mm – 16.42kg/m²

10mm – 22.12kg/m²